

BRIDGE

By Paul Thurston

NORTH
 ♠ AK1096
 ♥ J95
 ♦ J104
 ♣ 83

WEST
 ♠ 75432
 ♥ 2
 ♦ Q963
 ♣ 1094

EAST
 ♠ QJ8
 ♥ KQ108764
 ♦ 872
 ♣ -----

SOUTH
 ♠ -----
 ♥ A3
 ♦ AK5
 ♣ AKQJ7652

Vulnerable: North-South

Dealer: East

The bidding:

West	North	East	South
		3♥	Dbl
Pass	4♣	Pass	6♣

All Pass

Opening lead: ♥ 2

ble clearly didn't bring an immediate solution to South's bidding dilemma ("how high should I go?"), it did bring news, via North's jump response, that there were some values across the way.

And after a compromise leap to slam (too much for a mere bid of game, a grand slam undertaking being a bit too speculative) and the opening lead, there were indeed values (two sure tricks) in dummy so that the partnership seemed to have 13 top winners between them — just no immediately obvious way for South to reach North's contribution of two good spades.

This time, South's abundance of goodies also contained one often insignificant but this time invaluable card — the club deuce — and by utilizing that asset, South found a way to dummy at the cost of only one trick in place of Richard's proffered kingdom.

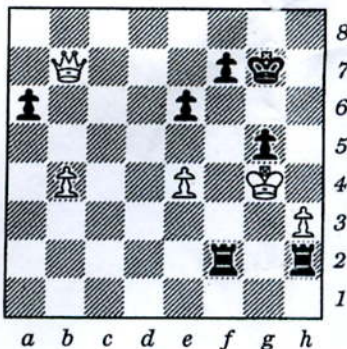
After winning the heart ace, declarer played ace, King and the club deuce — no, he hadn't miscounted trumps, but look at the quandary West was in after winning that most unexpected trump trick! Stripped of hearts (something South knew from the opening bid) and clubs, West had to lead either a diamond or a spade, either of which would allow South access to dummy and

12 of the 13 tricks he seemed to have started with. Good trade!

■ Feedback always welcome at thurston@computan.on.ca

CHESS

By Shelby Lyman



BLACK FORCES MATE

Hint: Up against the wall.

Solution:
 1... R(h)g2ch! 2. Kh5 Rf4!
 (with the lethal threat of ... Rh4
 mate) [Perry-Kerr '99].

If Richard the Third had been a bridge player and encountered this treacherous deal, he might well have offered his kingdom, with or without horse attached, for an entry to dummy.

No one is ever quite sure how to bid a freaky monster like South's hand, although starting with a takeout double over East's preemptive opening would be favoured by many. While the don-